



Staron® staircase cladding in Bright White.
Project: Frankston Private Hospital, Victoria, Australia.
Designer: Silver Thomas Hanley.
Photography: Vstyle Photography.



ABOUT Staron® Solid Surfaces

Staron® Solid Surfaces is comprised of a natural and safe pure mineral derived from bauxite ore and blended with an advanced pure acrylic resin, resulting in a premium surface material. Staron® Solid Surfaces is suitable for endless applications in a commercial or residential project. With a smooth finish and a range of over 90 colours to select from, Staron® is both aesthetically and functionally pleasing. Staron® offers a warm, soft and soothing feel to the skin. It does not feel 'cold' like many other surfaces do. Staron® also offers a hygienic finish that abolishes cross contamination, perfect for dental surgeries, hospitals and aged care facilities. Staron® prevents the growth of mould or mildew, providing a clean surface solution. Staron® does NOT contain any harmful silica.

The thermoformability of Staron® allows for designs of ergonomically friendly applications for wheelchair access. The non-porous and slip resistant nature of Staron® also means it can be used in and around showers and bathtubs by creating curves for easy access. The smooth nature of Staron® adds heightened hygiene and eliminates dirt trapping crevices, that is essential in this type of industry.

Staron® also extends itself to fully integrated dentistry bowls, baby baths or sinks and vanities - with no open joins, just one continuous surface. Create monolithic wall surfaces, toilet partitions, food preparation kitchenettes and nurses stations - the possibilities are endless. Staron® is renewable, meaning that after years of use it can be sanded to be restored back to its original condition. Staron® can be formed and moulded into any shape or design imaginable. It can be sculpted to fit around curves or be carved into logos, designs or sculptures.

Staron® can be inlaid, creating a blend of colours into one piece. The flexibility of Staron® extends to limitless edge profiles; drop down edges, and splash backs. All this comes in an environmentally sustainable material, with a 10 Year Warranty.

ABOUT Austaron Surfaces

Austaron Surfaces are the proud distributors of Staron® Solid Surfaces. Austaron Surfaces was established with an aim to provide quality surfaces and finishes to the Australian market. Austaron's product range is utilised by designers, architects, retailers, builders and also extends to consumers. Our products are used across many industry segments including but not limited to: retail, healthcare, entertainment, food service, office fit-outs, residential and many commercial projects. With an industry experienced sales team based in all states of the country, the business works together with project managers and designers on projects from the specification stage, all the way through to delivery of the product. For more information on Austaron Surfaces and their product portfolio, visit: www.austaron.com.au





The Benefits of Staron® Solid Surface in Healthcare

- Virtually Seamless**
 Monolithic installation improves design flow – there are no open joints or seams to trap unwanted dust, fluids or contamination.
- Easy to Maintain:**
 Staron is a homogeneous, colour-through product, making it repairable and renewable via light sanding and polishing.
- Non-porous:**
 Impervious surface prevents the growth of bacteria or mildew and reduces the possibility of cross-contamination.
- Easy to clean:**
 Cleaning and sanitising is accomplished with non-abrasive wipe-on or spray-on products common to healthcare.
- Sustainable in Design:**
 Manufactured to strict environmental standards meeting all codes and regulations for interior construction materials.
- Versatile Design:**
 Over 90 colours are available from calming neutral to playful bold tones – ideal for healthcare interiors.
- Premium Quality:**
 Staron Solid Surface is a quality surface and longer-lasting when compared to other materials – which makes it perfect for high traffic environments.
- Resistant to Stains and Chemicals:**
 Resists various chemicals, fluids and contaminants often found in healthcare environments.
- Excellent Durability:**
 Superior strength and impact-resistance means less maintenance and a longer, more cost-effective life cycle.
- Homogeneous:**
 Staron is a homogeneous product which means there is no surface layer or polishes – it is the same colour and material throughout the thickness of the sheet.

Fully integrated Staron® vanity bowl and benchtop featured in Bright White at a dental clinic.



Frankston Private Hospital

Victoria, Australia

Designer: Silver Thomas Hanley. **Staron® colour & application:** Bright White clad to nurses station. **Photography:** Paolo Cappelli.

Silver Thomas Hanley was commissioned to design a new building to extend the existing facilities of Frankston Private Hospital. The contemporary new building provides state-of-the-art private healthcare, so the materials selected for the fit-out had to reflect this quality. Staron® Solid Surface was selected to be clad to the cabinetry of a nurses station in colour Bright White. The surface extends from the front of the nurses station, up to the top counter area and down to the desk space on the other side. Staron® has also been thermoformed to create curves that softly wrap around the corners of the nurses station. The hygienic, non-porous, smooth and monolithic nature of Staron® make it the perfect surface solution to create a suitable application in a hospital environment. The joining capabilities also means that the surface has no open joints eliminating dirt trapping crevices. Staron® is warm and inviting and has the performance requirements to create a safe hospital surface solution for medical staff and patients.



Monash Children's Hospital

Victoria, Australia

Designer: Silver Thomas Hanley. **Staron® colour & application:** Thermoformed Bright White clad to reception cabinetry. **Photography:** Dianna Snape.

The Monash Children's Hospital is Australia's third largest children's hospital. When the hospital was designed, the aim was to provide one coherent public identity for the comprehensive paediatric services provided across several campuses in a new progressive children's hospital. The look and feel of the hospital was also extremely important to provide an environment where children feel comfortable and positive in a hospital surrounding. Staron® was selected as the surface solution to create a reception space. The material was clad to all sides of the reception cabinetry in colour Bright White. It was also thermoformed to create curves into geometric shapes, creating an interesting and inviting space in one continuous, monolithic surface. The hygienic, non-porous nature along with easy maintenance requirements make Staron® the perfect surface solution in a project environment where creating a safe and healthy space is a priority.





Adelaide Women's and Children's Hospital

Adelaide, Australia

Designer: GHD, Adelaide. **Staron® colour & application:** Metallic Yukon arch and wall cladding.

The Starlight Express Room in the Adelaide Women's and Children's Hospital is a welcome retreat for seriously ill children/teenagers and their families giving them an environment away from the rigours of hospital life. The concept focuses on the idea of an internal garden that aims at bringing the outdoor environment indoors to create a hub of fun and distraction. The key to making the project successful was the use of a serpentine form and materials that ensured a seamless finish. The entry arch was achieved through the use of cladded and thermoformed Staron®. In addition, the material was extended through to key joinery items such as the media desks, the TV broadcast hub, ceilings, clad to nurses stations and the sign module. Staron® lends itself to hospital environments by ensuring surfaces that are visually stimulating, also meet the stringent hospital standards in relation to cleanliness and hygiene.

LiveLife Pharmacy

Queensland, Australia

Specified by: Annette Warner, Annette Warner Pty Ltd, Building Design Consultants. **Staron® colour & application:** Supreme Ocean View, Mosaic Dalmatian, Mosaic Nimbus, Pharmacy dispensary and point of sale benchtops. **Cabinetmaker:** Acclaim Shopfitting Pty Ltd.

The retail upgrade of this busy pharmacy on Hastings Street, Noosa Heads, required a material that withstands the high traffic demands of retail, while also providing a hygienic and chemical resistant surface for the pharmacist's needs. The designer chose to combine a variety of different materials throughout the fit-out to complement the beachside location. Staron® was selected in colours Mosaic Dalmatian and Mosaic Nimbus, for its practical qualities and unique colours. It has been used for the dispensary and point of sale benchtops. Staron® suits the needs of this environment, and complements all the other finishes, creating a timeless elegance with practical functionality.



University of Queensland

Queensland, Australia

Designer: Luke Pendergast, Conrad Gargett. **Staron® colour & application:** Aspen Glacier laboratory benchtops. **Photography:** Christopher Frederick Jones.

The Teaching Space Project delivered a High-tech PC2 undergraduate interactive wet laboratory facility. The space has been designed to fill identified key gaps in the school's upper-level undergraduate teaching program. The new teaching facility is located within the Heritage Listed Goddard Building (1961) which forms a part of the University of Queensland's Great Court Complex. The project enables the ability to instruct students in modern biological techniques requiring a high level of containment, and the capacity to deliver small-group tutorial-based instruction within the context of computer-based learning. The aim was to provide, high quality, state-of-the-art teaching spaces that are future oriented and have the facilities and flexibility to teach 21st century biology. Staron® was used for all the benchtop surfaces not only for its visual appearance and design flexibility, but also it is hard wearing, non-porous, chemical resistance and virtually seamless nature - making it an ideal product for a physical containment laboratory design.



Staron® staircase wall cladding in Bright White.
Project: Frankston Private Hospital, Victoria, Australia.
Designer: Silver Thomas Hanley.
Photography: Vstyle Photography.

Wall Cladding

The seamless nature of Staron® Solid Surfaces makes it suitable for wall cladding in any type of healthcare environment. Walls can be created with one smooth, long and continuous surface with no open joints or dirt-trapping crevices, creating a hygienic finish that eliminates cross-contamination. The thermoformability of Staron® allows the creation of curves for added design freedom. Seating, reception areas, showers, baths or washbasins can be integrated virtually seamlessly onto walls that curve around corners, and all the way up to the ceiling. Columns can also be clad in Staron® and create limitless shapes, designs or forms. Operating theatre walls can be entirely clad in Staron® for an environment where hygiene is exceptionally important. **Staron® Evermoin®** is an antimicrobial solid surface that is ideal for wall cladding applications in a healthcare environment as it **actively kills bacteria**. [For more information on Staron® Evermoin® click here.](#)

Healthcare Application Solutions with Staron® Solid Surfaces

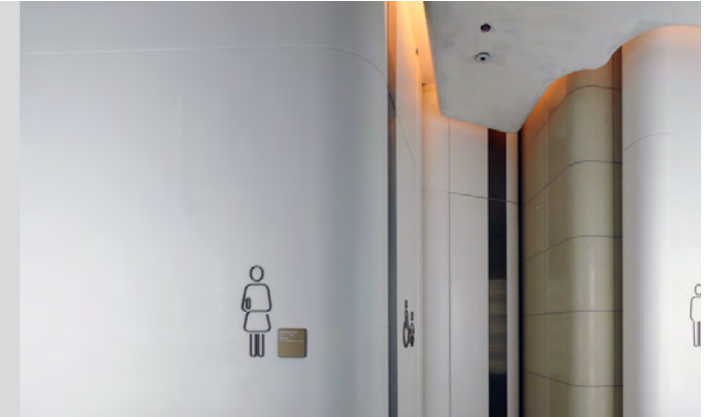


NURSES' STATIONS / RECEPTION

Staron® is available in an extensive selection of colours to make the first entry point of a hospital feel warm and inviting to patients and visitors. Staron® can be thermoformed for curves, and it can also be inlayed using multiple colours to create interest. Computers and equipment can be housed in custom designed Staron® hubs and storage spaces. The hygienic and durable qualities of Staron® also means that it is suitable for high traffic areas.

PUBLIC SPACES

Staron® can be used for hygienic wall panels throughout a hospital with no open joints. The surface continues in one monolithic finish. Wall panels can be used in corridors, patient rooms, elevators and more. Staron® can also be used in exterior cladding due to its non-porous and durable nature. Create hygienic walls in the public amenities and waiting rooms to eliminate cross contamination.



OPERATING THEATRES

The hygienic and low maintenance of Staron® makes it the perfect solution for use in operating theatre walls, countertops, integrated sinks and vanities. Wash basins can also be custom designed and thermoformed to fit the space and requirements. The non-porous nature of Staron® also resists stains such as blood and betadine commonly found in operating theatres to create a hygienic, safe and clean operating theatre for patients and hospital staff.

HOSPITAL FAÇADES

Create entire building façades with Staron® Solid Surfaces. Staron® can be fabricated into virtually any desired shape to follow the angles of a building. The maintenance of the surface is also convenient and is renewable by simple cleaning or sanding. Staron® is also resistance to stain or environmental pollutants. It is non-porous and has a low rate of water absorption. Staron® is Class 1/A flame retardant in performance (ASTM E84) and can be restored in the event of a fire.



PATIENT ROOMS

Staron® can be used for wall cladding, tables, bed headboards, bedside tables or any other type of furniture. Staron® can also be used to create integrated solutions for televisions, electrical cords and plugs, oxygen and monitor systems and more. The cleanliness of Staron® also creates a safe environment for patients, visitors and healthcare staff. Staron® can also extend to bathrooms for vanity bowls, vanity tops, even shower walls and thermoformed floors to allow wheelchair access.

MATERNITY & PAEDIATRICS

The vivid colours of Staron® can be used to create a welcoming and interesting surrounding for healthcare facilities that are designed for infants and children. Inlay different colours of Staron® to create artistic and colourful walls and furniture. The thermoformable nature of Staron® also allows for the design of integrated baby baths, change tables, wall panels and play areas with one monolithic surface that is durable, easy to clean and aesthetically pleasing.



LABORATORIES

Staron® can be shaped and formed to create workspaces and areas that are suited and organised for laboratory work. Shelves, sinks and storage compartments can be designed to ensure that the requirements of the staff are met for a productive workspace. The non-porous and seamless nature of Staron® also ensures that samples and tests are not contaminated. No open joints means that dirt trapping crevices are totally abolished for a hygienic and healthy work surface that is also safe for staff.

KIOSKS / CAFETERIAS

Staron® meets NSF51 National Sanitation Foundation Accreditation for safe food hygiene, which means it is a practical surface for commercial kitchens. The surface will not promote the growth of bacteria when exposed to food, so it is a suitable surface for all food contact areas. Use Staron® for coffee kiosks, cafeterias, café table tops and more. Staron® can even be used as a surface solution for florist and gift kiosks.



Integrated Staron® Sinks

Staron® has a selection of standard sinks and vanity bowls. Custom designed sinks can also be made to create baby baths or sinks to a specific size. Staron® sinks are joined to the Staron® benchtop with a special Staron® adhesive, and sanded. The result is a monolithic surface that continues from the bench to the sink in one smooth and continuous surface. No open joins and no dirt trapping crevices.

[Click here to view the entire sink collection.](#)

Staron® Solid Surface Certification



Staron® staircase cladding in Bright White.
Project: Frankston Private Hospital, Victoria Australia.
Designer: Silver Thomas Hanley.
Photography: Vstyle Photography.

Staron® Evermoin® is an antimicrobial solid surface that is ideal for wall cladding applications in a healthcare environment as it **actively kills bacteria**. [For more information on Staron® Evermoin® click here.](#)



Antimicrobial Staron® Solid Surface Advanced Solution for Healthcare

Evermoin® by Staron® is an ideal surface solution for applications that are exposed to sensitive people and/or animals such as the sick, elderly or children. It provides the hygiene and design versatility of Staron®, with a bacteria killing, antibacterial inclusion. Standard Staron® suppresses fungal and bacteria due to its non-porous nature, while Staron® Evermoin® **actively kills** bacteria. Evermoin® anti-microbial surfaces from Staron® can be used in almost any interior space. Create nurses workstations and wall cladding in a functional and renewable material that is durable as well as ultra-hygienic. Achieve the perfect blend of simplicity in design with an anti-microbial surface engineered for a healthier life.

[Click here to view detailed brochure](#)



Speedy antibacterial effect and action against bacteria and fungi.

Excellent antimicrobial retention, quality stability and durability.

Harmless to the human body and environment (certified by EPA, NSF, FDA).

staron®
Solid Surfaces

evermoin®
More Innovation, More Integration



Heightened Hygiene.
Kills >99.9% of bacteria.
Contains NO harmful silica.



Greenguard & Greenguard Gold Certified.



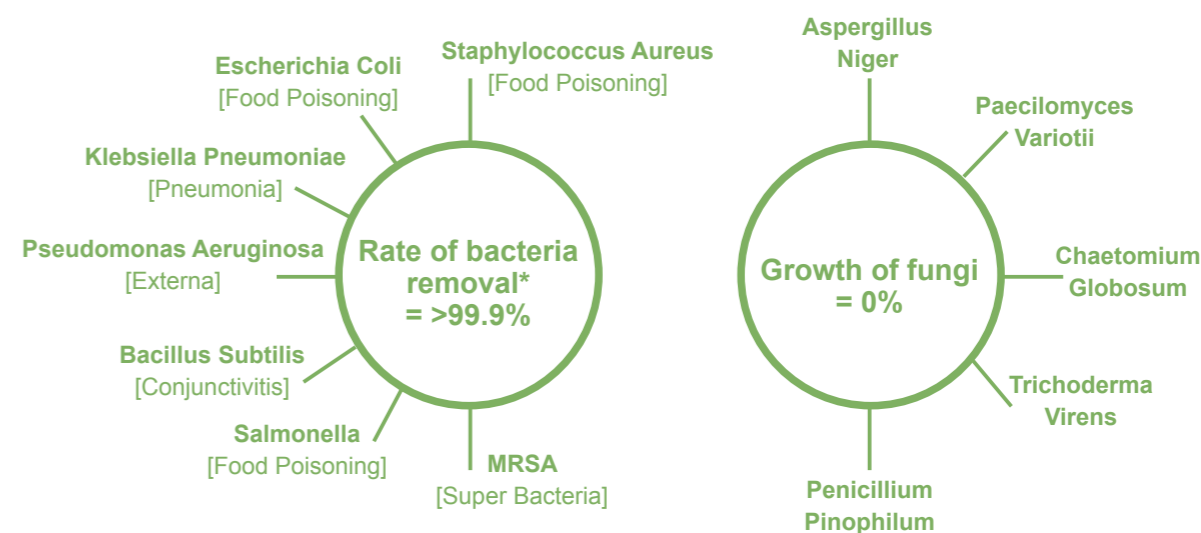
Simple Maintenance.
Non porous. Resistant to mould and mildew.



Certified by:
US Environmental Protection Agency.
National Sanitation Foundation.
US Food & Drug Administration.

Staron® Evermoin® has fast antimicrobial activity to the most common bacteria.

*The bacteria removal rate >99.9% means the number of bacteria is reduced from 10 million to 10,000.

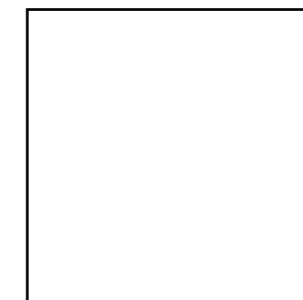


Dimension:

W.3680 x L.760 x 12 [mm]

W.2500 x L.760 x 6 [mm] *available by special order*

Please discuss the possibility of using Staron® Evermoin® in your next project with your Austaron representative.



Colour: Ultra Bright



The design versatility of Staron® means that limitless edge profile thicknesses and designs can be fabricated monolithically from a 12mm sheet. The joining capabilities also create smooth, wide and long surfaces with no open joints - just one continuous surface that looks and performs as one piece of solid surface.

[Click here to view Performance Properties](#)

BACTERIAL RESISTANCE

Test method: ASTM G 22 (Determining Resistance of Plastics to Bacteria)

Strains: Pseudomonas Aeruginosa (ATCC 13388)

Culture condition: 96.8 +/- 1.8°F(36 +/- 1°C), 90%RH, 21 days

Culture Time	0 WEEK	1 WEEK	2 WEEKS	3 WEEKS
RESULT	0	0	0	0

CHEMICAL RESISTANCE

Test method: Apply 3 drops of each chemical reagent on the surfaces of Staron® Solid Surfaces. Expose the sample for 16 hours; covered with glass plate and uncovered. Check the surface and scrub the surface with a wet Scotch-Brite® Pad and bleaching cleanser such as Ajax®.

Test Result: THE RESIDUE FROM THE FOLLOWING CHEMICAL REAGENTS CAN BE REMOVED WITH A WET SCOTCH-BRITE PAD AND BLEACHING CLEANSER.

Acetic acid (10%)	Formaldehyde	Pencil lead
Acetone Ammonium hydroxide (5,28%)	Gasoline	Permanent marker pen Soapless detergents
Ammonia	Gentian violet	Shoe polish
Amyl alcohol	Grape juice	Sodium bisulfate
Amyl acetate	Hair dyes	Soy sauce
Ball point pen	Household soaps	Sulfuric acid (25,33,60%)
Benzene	Hydrogen peroxide	Sodium hydroxide solution (5,10,25,40%)
Bleach (household type)	Hydrochloric acid (20,30,37%)	Sodium sulfate
Blood	Iodine (1%)	Sugar (sucrose)
Butyl alcohol	Ketchup	Sulfuric acid (25,33,60%)
B-4 body conditioner	Lemon juice	Tetrahydrofuran
Calcium thiocyanate (78%)	Lipstick	Tea
Carbon disulfide	Mercurochrome (2%)	Toluene Urea (6%)
Carbon tetrachloride	Methyl ethyl ketone	Tomato juice
Citric acid (10%)	Methyl red (1%)	Uric acid
Coffee	Methanol	Vinegar
Cottonseed oil	Methyl orange (1%)	Washable inks
Cigarette (nicotine and tar)	Mustard	Wine
Cooking oils Cupra ammonia	Mineral oil	Xylene
Ethanol	Nail polish	Zinc Chloride
Dishwashing liquid/powders	Naphthalene	
Ethyl acetate	N-hexane	
Ethyl ether	Olive oil	
	Perchloric acid	

DURABILITY

Properties	Tensile Strength	Flexural Strength	Flexural Modulus	Elongation	Gloss [60 Gardner]	Abrasion Resistance
Test Procedure	ASTM D 638	ASTM D 790	ASTM D 790	ASTM D 638	NEMA LD-3	ANSI Z 124
Result	6,000 psi	10,000 psi	1,000,000 psi	0.50%	5-20	Pass

FIRE RESISTANCE

AS/NZS 1530.3:1999 Fire Testing - Simultaneous determination of ignitability, flame propagation, heat release and smoke release.

Test Method: Staron® has been tested in accordance with **Australian Standard 1530**, method for fire tests on building components and structures, Part 3: Simultaneous determination of ignitability, flame propagation, heat release and smoke release, 1999. For the test, each sample was clamped to the specimen holder in four places.

Test Result:

Ignitability Index (0-20)	Spread of Flame Index (0-10)	Heat Evolved Index (0-10)	Smoke Developed Index (0-10)
11	0	2	0-1

Staron® has also been tested within accordance of: **AS/NZ 3837 - Wall & Ceiling Linings Cone Calorimeter Test.**

SLIP RESISTANCE

Staron® has been tested within accordance of **AS/NZS 4586**. For full test results visit staron.com.au



Austaron Pty Ltd
Ph: 02 9822 7055
sales@austaron.com.au
austaron.com.au

<u>Specifications</u>	<u>State</u>	<u>Trade</u>
0439 446 986	Sydney	0417 417 624
0439 446 986	Newcastle	0417 417 624
0455 666 816	NSW	0455 666 816
0455 666 816	ACT	0455 666 816
0407 842 037	VIC	0403 287 597
0417 189 121	WA	0417 189 121
0407 617 040	SA	0407 617 040
0419 779 173	Brisbane South	0419 779 173
0414 481 319	Brisbane North	0414 481 319
0414 481 319	F.N.Q.	0428 267 685
0414 481 319	NT	0428 267 685
0438 216 606	TASMANIA	0438 216 606

LIKE US: facebook.com/staronsolidsurfaces
FOLLOW US: instagram.com/staronsolidsurfaces

AUSTARON SURFACES

Proud distributors of:

staron[®]
Solid Surfaces

Kaynemaile[®] 
Architectural Mesh

a c r y l i c
c o u t u r e

staron.com.au